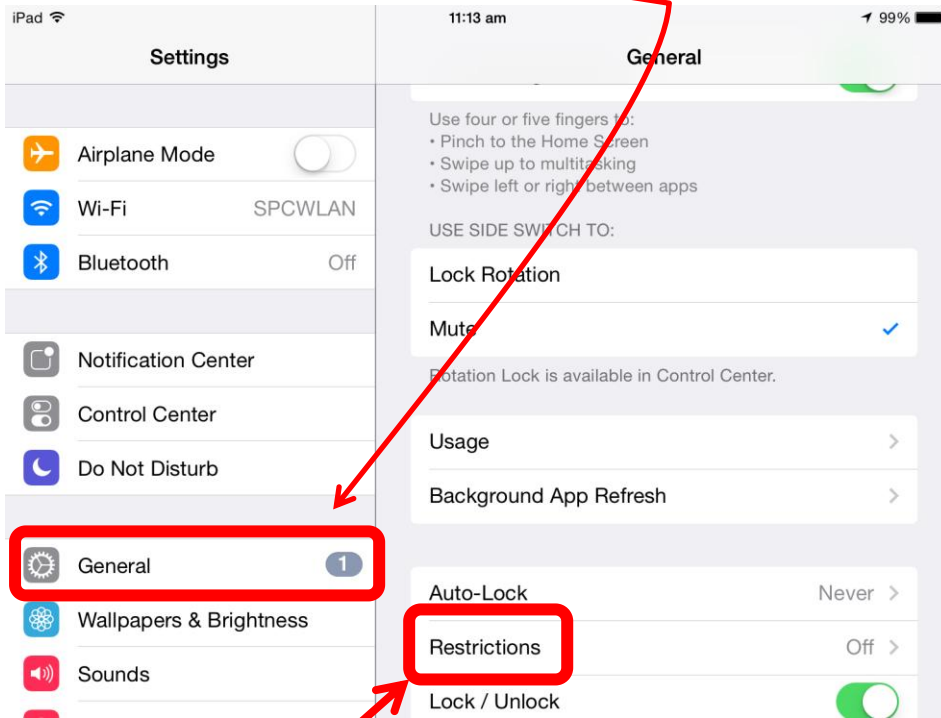


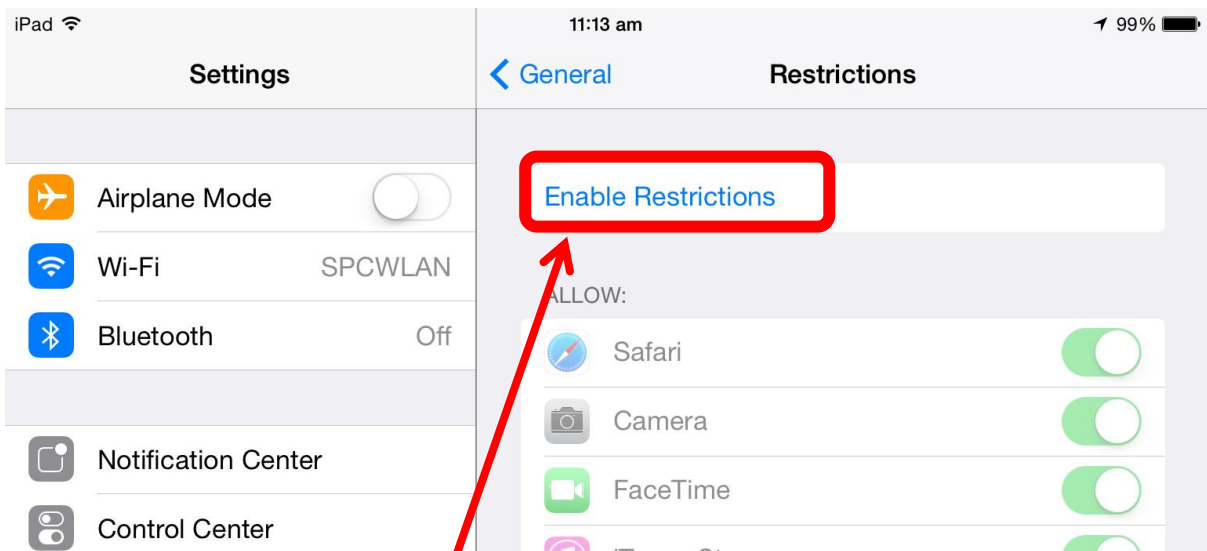
## Placing Restrictions on an iPad

There are a number of restrictions that can be implemented on an iPad and they are easy to enable.

1. Got to *Settings/General*

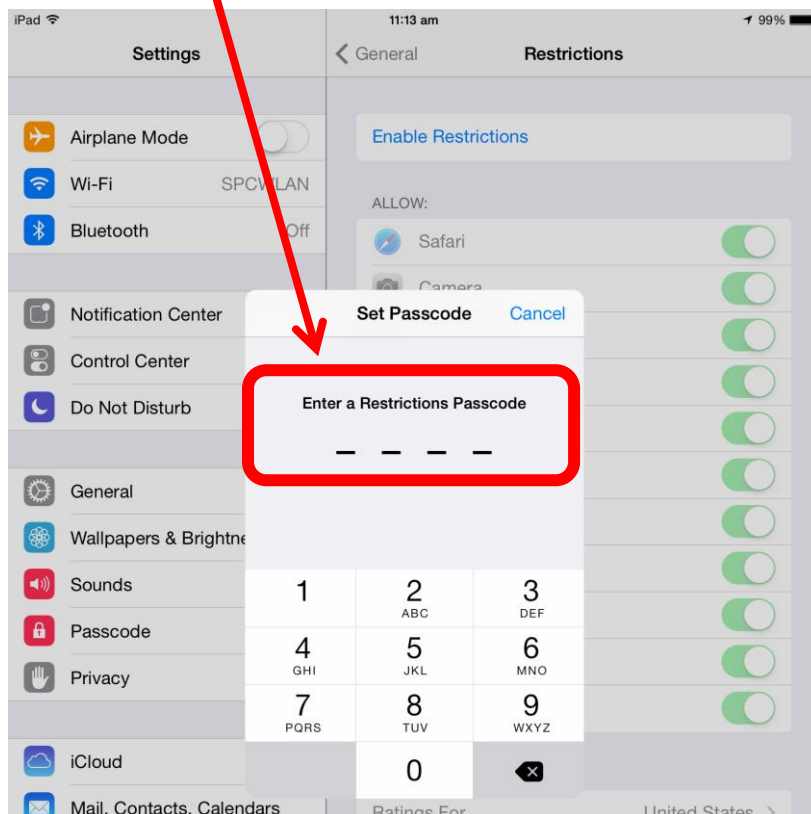


2. Click on *Restrictions*



3. Click on *Enable Restrictions*

4. Type in a Passcode. Write it down somewhere. **DO NOT FORGET THIS!!!**



5. You can now enable any of the available restrictions



6. Click on Disable Restrictions to turn them off. You will require the Passcode to do this.